

GCR Series Cobot



SIASUN CO., LTD.

<https://www.ducorobots.com>

We are Dedicated to the Advancement of Cobot.



Facebook



Linkedin



Youtube



SIASUN CO., LTD.

- 📍 Jinqiao Operations Headquarters: NO.358 Building 4 Jinhu Road, Shanghai
- 📍 Lingang Industrial Base: NO.199 Boyi Road, Shanghai
- ☎ 400 088 5288
- ✉ message.in@siasun.com

GCR Series Cobot



Safety

With conventional collision detection, force and power detection, functional safety by TUV SUD certification, the first through IEC61508 certification. Human-machine collaboration is safer.



Smart

Multiple scenario software packages added (welding, palletising, etc.)
A variety of external interface support (DI, DO, AI/O, etc.)
Support cloud robot data monitoring, remote OTA upgrade
Supports one-click deployment of multiple devices and remote backup of data



Wide Application

2D/3D visual depth compatibility;
Power control and other ecological support perfect, support multi-application development



Easy Maintenance

With Traction Teach Programming, Less limitation to robot user;
Training 4 hours, you can achieve basic programming.



Light and Handy

High-load robots with load to weight ratios up to 1:2.44.
Adoption of a new generation of robot control cabinets 50%;Reduction in size and 30 % reduction in weight.
Effectively improve space utilization.



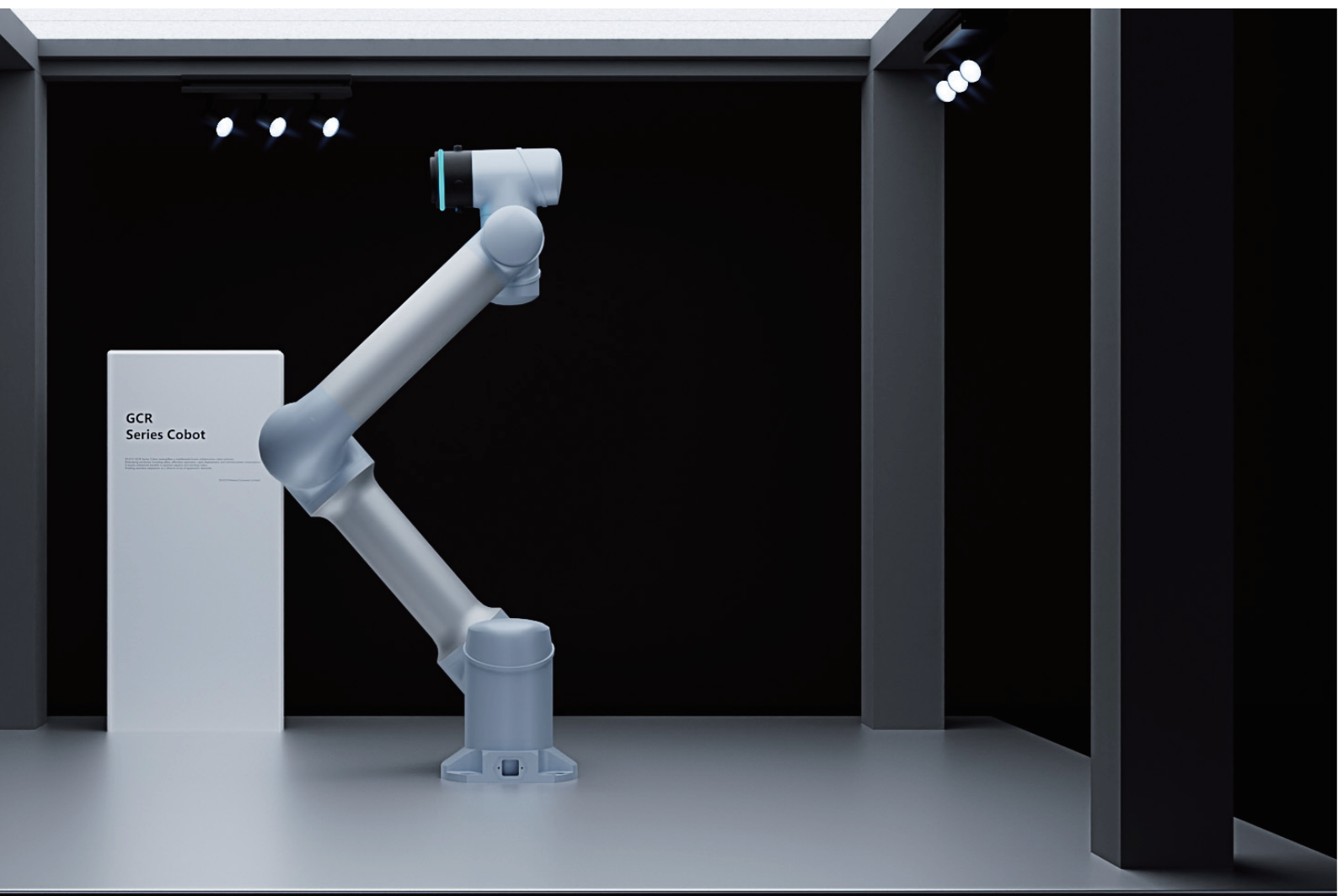
ECO

Power consumption as low as 200W No need to replace lubricating oil.
Reduce the cost of EIA and help the development of dual carbon.



Product Introduction

There are ten types of 6-axis cobot; GCR30-1100,GCR25-1800,GCR20-1400,GCR16-2000,GCR16-960,GCR12-1300,GCR10-1300,GCR7-910,GCR5-910,GCR3-618.With significant advantages--higher payload and working range, and features of cobot such as collaborativesafety, easy-to-use and energy-saving, these robots can adapt to more application needs.



Industry



*Petrochemical
Industry*



*Automobile
Industry*



*3C
Industry*



*Electric
Industry*



*Petrochemical
Industry*



*Medical
Industry*



*Pan
Industry*



*Consumer Goods
Industry*



*Painting
Industry*



*Education
Industry*

Technical Parameters

GCR30-1100



GCR25-1800



GCR20-1400



GCR16-2000



GCR30-1100

GCR25-1800

GCR20-1400

GCR16-2000

Max Payload

30kg

25kg

20kg

16kg

Degree of Freedom

6

6

6

6

Max TCP Speed

2.0m/s

2.5m/s

2.2m/s

3.5m/s

Max Straight-line Speed

1.0m/s

1.5m/s

1.5m/s

1.8m/s

Reach

1100mm

1800mm

1400mm

2000mm

Repeatability

±0.05mm

±0.05mm

±0.05mm

±0.05mm

Joint Range

Max Speed

J6 ±360°

225°/s

225°/s

225°/s

225°/s

J5 ±360°

225°/s

225°/s

225°/s

225°/s

J4 ±360°

225°/s

225°/s

225°/s

225°/s

J3 ±360°

180°/s

150°/s

180°/s

180°/s

J2 ±360°

120°/s

100°/s

120°/s

120°/s

J1 ±360°

120°/s

120°/s

120°/s

120°/s

Tool Interface

GB/T 14468.1-50-4-M6(eqv ISO 9409-1)

End Joint I/O

2 Dig I/O, 24V,0.6A

2 Dig I/O, 24V,0.6A

2 Dig I/O, 24V,0.6A

2 Dig I/O, 24V,0.6A

Power Supply

220-240VAC 47-63Hz10A/100-200VAC 47-63Hz 16A

Power Consumption

Typical Power Consumption600W

Typical Power Consumption600W

Typical Power Consumption600W

Typical Power Consumption600W

Installation

Installed in any Direction

Land tyoe

Installed in any Direction

Installed in any Direction

IP Class

IP54/IP65

IP54/IP65

IP54/IP65

IP54/IP65

Ambient Temperature Range

-10°C-50°C

-10°C-50°C

-10°C-50°C

-10°C-50°C

Storage Temperature Range

-40°C-55°C

-40°C-55°C

-40°C-55°C

-40°C-55°C

Robot Dimensions

1395x420x290mm

2300x440x252mm

1695x388x205mm

2300x388x205mm

Robot Package Size

1060x500x600mm

1295x540x515mm

1060x500x600mm

1465x516x472mm







Net/Gross Weight

64kg/75kg

61.6kg/70kg

66kg/75kg

60kg/68kg

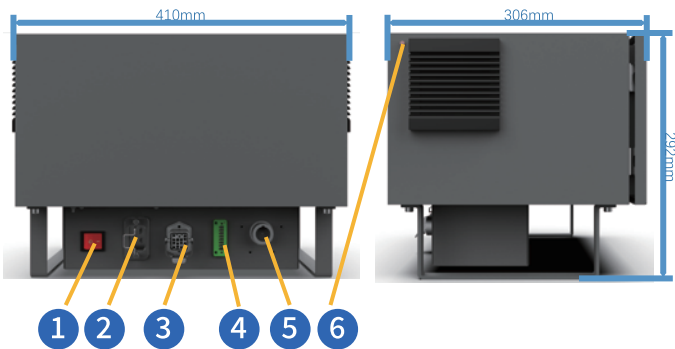
					
GCR16-960	GCR12-1300	GCR10-1300	GCR7-910	GCR5-910	GCR3-618
GCR16-960	GCR12-1300	GCR10-1300	GCR7-910	GCR5-910	GCR3-618
16kg	12kg	10kg	7kg	5kg	3kg
6	6	6	6	6	6
3.0m/s	3.8m/s	3.8m/s	3.6m/s	3.6m/s	1.0m/s
1.5m/s	1.5m/s	1.5m/s	1.5m/s	1.5m/s	0.8m/s
960mm	1300mm	1300mm	917mm	917mm	618mm
±0.03mm	±0.03mm	±0.03mm	±0.02mm	±0.02mm	±0.02mm
Max Speed					
225°/s	225°/s	225°/s	225°/s	225°/s	225°/s
225°/s	225°/s	225°/s	225°/s	225°/s	225°/s
225°/s	225°/s	225°/s	225°/s	225°/s	225°/s
225°/s	225°/s	225°/s	225°/s	225°/s	225°/s
180°/s	180°/s	180°/s	200°/s	225°/s	225°/s
180°/s	180°/s	180°/s	200°/s	225°/s	225°/s
GB/T 14468.1-50-4-M6(eqv ISO 9409-1)					
2 Dig I/O, 24V,0.6A	2 Dig I/O, 24V,0.6A	2 Dig I/O, 24V,0.6A	2 Dig I/O, 24V,0.6A	2 Dig I/O, 24V,0.6A	2 Dig I/O, 24V,0.6A
100-240VAC 47-63Hz 10A					
Typical Power Consumption400W Typical Power Consumption500W Typical Power Consumption400W Typical Power Consumption200W Typical Power Consumption200W Typical Power Consumption200W					
Installed in any Direction					
IP54/IP65	IP54/IP65	IP54/IP65	IP54/IP65	IP54/IP65	IP54/IP65
-10°C-50°C	-10°C-50°C	-10°C-50°C	-10°C-50°C	-10°C-50°C	-10°C-50°C
-40°C-55°C	-40°C-55°C	-40°C-55°C	-40°C-55°C	-40°C-55°C	-40°C-55°C
1180x388x205mm	1512x388x205mm	1512x388x205mm	1100x330x200mm	1100x330x200mm	769x315x150mm
958x508x516mm	958x508x516mm	958x508x516mm	698x588x450mm	698x588x450mm	532x431x330mm
37kg/45kg	37.8kg/46kg	37.8kg/46kg	22kg/30kg	22kg/30kg	13kg/20kg

Control Box



Control Box
& Teach Pendant

The controller is used to control the robot's operations such as loading and unloading, grasping, polishing, handling, welding, gluing and oiling, as well as realizing the input and output control. The latest DUCO controller has tiny volume while taking into account the safety and flexibility, and has better performance in the field of human cooperation. It can be fully compatible with multiple series of robots, and also can be independently applied to automatic control systems



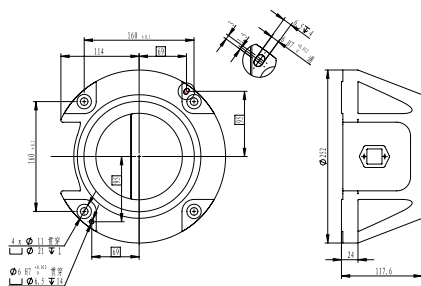
- 1 ON/OFF Switch
- 2 AC Input Ports
- 3 Cobot Ports
- 4 Teach Pendant Blocking Ports
- 5 Teach Pendant Ports
- 6 ANT Ports(WiFi options)

6

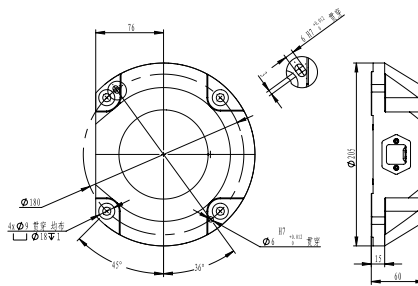
- | | |
|---------------------------------|---------------|
| 1 LAN1+USB 3.0 | 6 CIO |
| 2 LAN2+USB 2.0 | 7 DIO |
| 3 COM1 (232COM) | 8 SIO |
| 4 EtherCAT2 | 9 IO POWER |
| 5 EIO
2AI 2AO 485 INC
CAN | 10 VGA&COM3/4 |



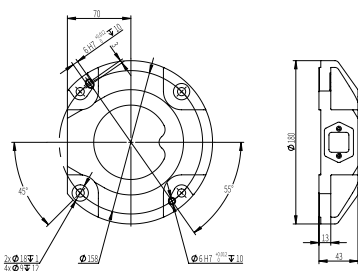
Base Flange



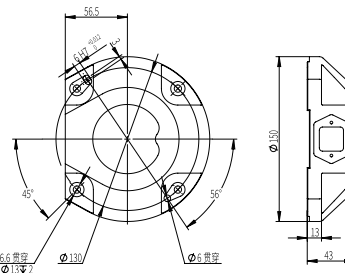
GCR25-1800/GCR30-1100
GCR20-1400/GCR16-2000



GCR16-960/GCR10-1300
GCR12-1300

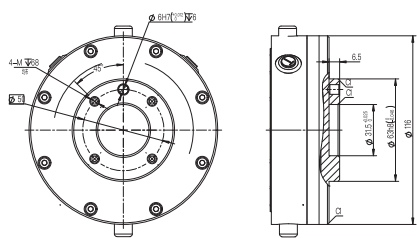


GCR5-910/GCR7-910

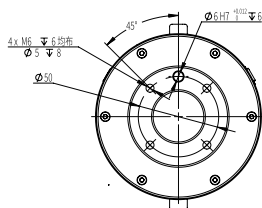


GCR3-618

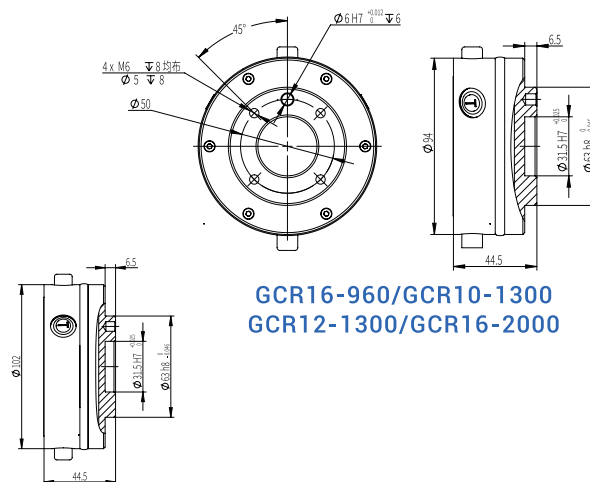
Tool Flange



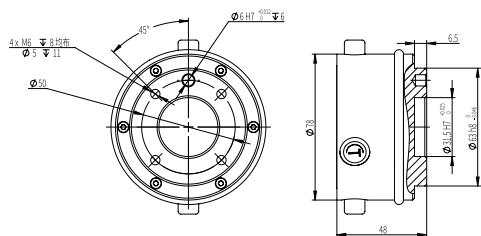
GCR30-1100/GCR20-1400



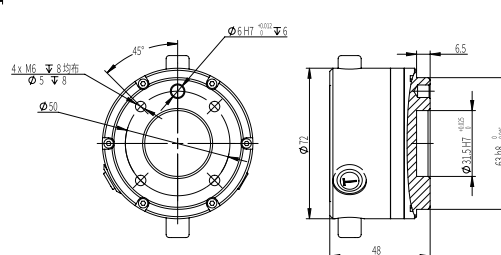
GCR25-1800



GCR16-960/GCR10-1300
GCR12-1300/GCR16-2000



GCR5-910/GCR7-910



GCR3-618