

SCARA

SA20A Series

Max.load capacity 20kg, Max.reach 1000mm

Features

Modular design:

Two arm-reach variants to accommodate more automation scenarios while reducing maintenance costs

Exceptional performance:

The XY axes both adopt a dual-support structure to further enhance rigidity. The combined screw drive mechanism improves torsional rigidity in the screw overturning direction by approximately 30% and increases rotational rigidity by about 70%, while also enabling it to withstand greater rotational inertia.

Easy to use:

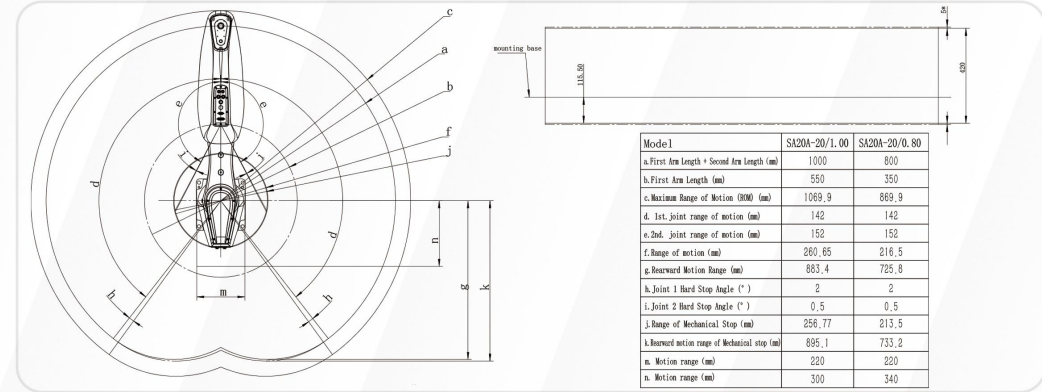
Internal wiring eliminates the need for corrugated tubing, reducing spatial constraints.



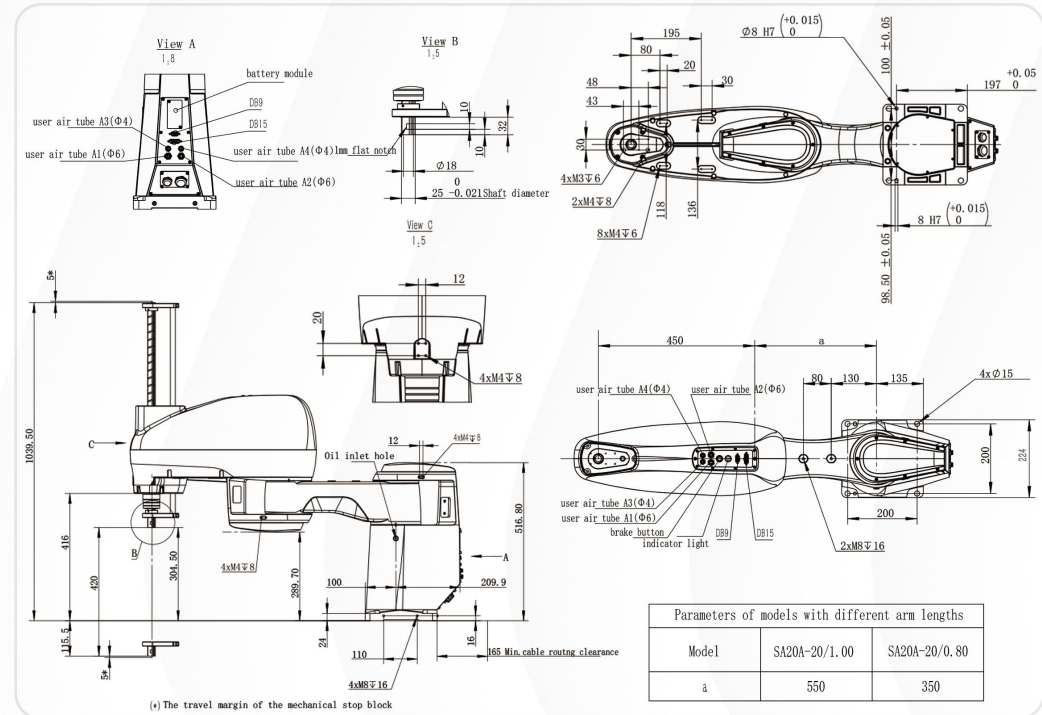
Specifications

Model		SA20A-20/0.80	SA20A-20/1.00
Working Radius (mm)	J1+J2	800	1000
	J1	350	550
	J2	450	450
Payload (kg)	Rated	10	10
	Max.	20	20
Weight of robot(kg)		54	57
Max.motion speed	J1+J2(mm/s)	9550	10800
	J3(mm/s)	1010	1010
	J4 (°/S)	705	705
Motion Range	J1 (°)	±142	±142
	J2 (°)	±152	±152
	J3 (mm)	420	420
	J4 (°)	±360	±360
Repetability	J1+J2(mm)	±0.025	±0.025
	J3(mm)	±0.01	±0.01
	J4 (°)	±0.01	±0.01
Takt time (s)		0.39	0.43
Allowable inertia of J4 (kg·m ²)	Rated	0.5	0.5
	Max.	1.0	1.0
Mounting holes (mm)		200x200, (4-∅15)	
Press-fit force of the 3rd joint(N)		250	
Noise level		≤75dB(A)	
Cable length (m)		Standard: 3m, Optional: 5m, 10m	
User cable		9 (9pin:D-sub)	
User piping		15 (15pin:D-sub)	
User piping		Air piping: 2x∅4mm, 2x∅6mm Pressure resistance: 0.59MPa	

Working Range



Installation Dimensions



新松机器人自动化股份有限公司
 SIASUN ROBOT & AUTOMATION CO., LTD.
 Add:NO.33 Quanyun Road,Hunnan District,Shenyang,P.R.China.
 Tel:400 800 8666
 E-mail:market@siasun.com
 VER: SX02300726-A/0